

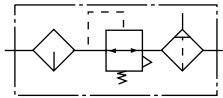
49

系列 Series 气源处理元件 Air Filter Combination

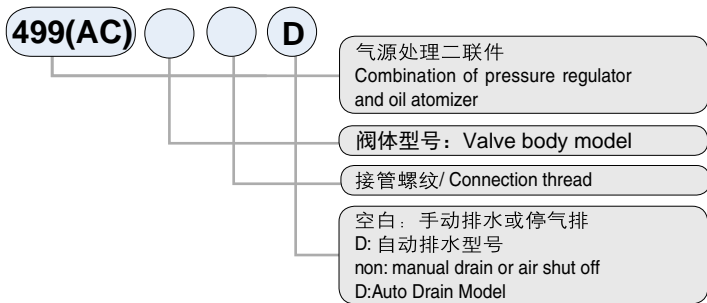
499(AC1010~5010) 系列气源处理组合元件 (二联件) series Filter Regulator and Lubricator (F.R.L)



图形符号 Graphical symbols



型号注释 Order Code



技术参数 Specification

保证耐压力/Pressure Resistance	1.5MPa(15kgf/cm ²)
最高使用压力/Max Working Pressure	1.0MPa(10kgf/cm ²)
环境及流体温度/Ambient And Fluid Temperature	5~60°C
*过滤精度/*Filter Precision	25µm
建议用油/Recommended Oil Use	透平1号油/Turbine No.1 Oil ISOVG32
容器材料/Bowl Material	聚碳酸酯/Polycarbonate
防护罩/Protective Cover	AC1010~2010(无) / (Not Available)AC3010~5010(有) / (Available)
调压范围/Pressure Regulating Range	AC1010:0.05~0.7MPa(0.5~7kgf/cm ²)AC2010~5010:0.05~0.85MPa(0.5~8.5kgf/cm ²)
阀型/Valve Type	带溢流型/With Overflow

*还有5、50 µm可供选择。/*5, 50µm are available

型号/Model		组件/Assembly						托架/Bracket	压力表/Pressure Gauge
手动放水型 Manual drain	注1) 自动排水型 Note 1) Auto drain	过滤减压阀 /Filter Regulator	油雾器/ Lubricator	注2) 额定流量 /Note2) Rated Flow(L/min)	注3) 接管口径 /Note3)Port Size(G)	压力表口径 /Pressure Gauge Thread	重量 /Weight (Kg)		
(499)AC1010-M5	无	AW1000	AL1000	90	M5	1/16	0.22	Y10T	G27-10-R1
(499)AC2010-01	(499)AC2010-01D	AW2000	AL2000	500	1/8	1/8	0.66	Y20T	G36-10-01
(499)AC2010-02	(499)AC2010-02D								
(499)AC3010-02	(499)AC3010-02D	AW3000	AL3000	1700	1/4	1/8	0.98	Y30T	
(499)AC3010-03	(499)AC3010-03D								
(499)AC4010-03	(499)AC4010-03D	AW4000	AL4000	3000	3/8	1/8	1.93	Y40T	
(499)AC4010-04	(499)AC4010-04D								
(499)AC4010-06	(499)AC4010-06D	AW4000-06	AL4000-06	3000	3/4	1/4	1.99	Y50T	
(499)AC5010-06	(499)AC5010-06D								
(499)AC5010-10	(499)AC5010-10D	AW5000	AL5000	4000	1	1/4	3.20	Y60T	G46-10-02

注1) AC2010有两种自动排水结构可选, 脉冲式自动排水器为常规选型, 还有杠杆式自动排水器可选, 订货时用“D2”表示, 如: AC3010-AC5010自动排水器结构以杠杆式为常规选型, 还有浮球式自动排水器可选, 详细说明请参阅自动排水器介绍。

注2) 供应商压力为0.7MPa(7.1kgf/cm²)的情况下。

注3) 接管口径另有Rc、NPT螺纹可供选择。

Note1) There are 2 types auto drain for AC2010, pulsed type and lever type. "D" means normal auto drain, pulsed type; "D2" means lever type auto drain. The normal auto drain for AC3010-AC5010 is lever type, but the float type auto drain is available for choose. Please check the details from AUTO DRAIN is page 55.

Note2) On condition circumstance that the supply pressure is 0.7MPa(7.1kgf/cm²) and set pressure is 0.5MPa(5.1kgf/cm²).

Note3) Rc, NPT thread are available.